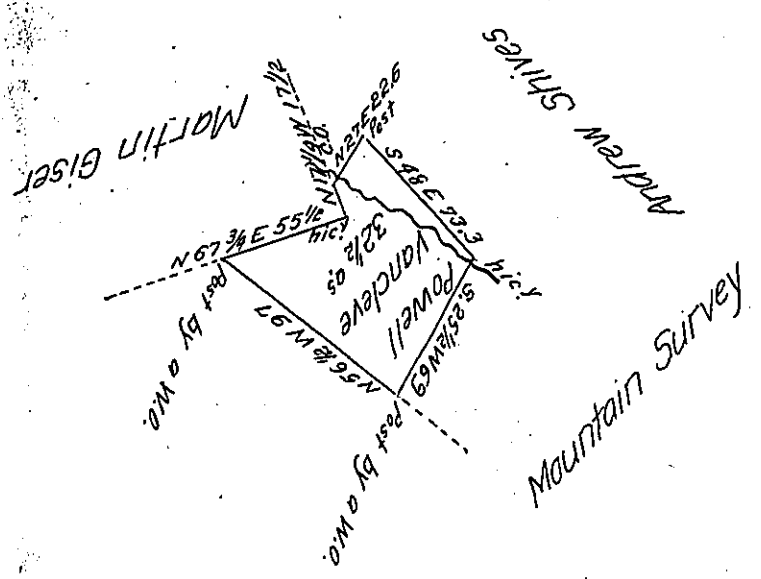


H-36-670.



Situate in Bethel Township Bedford County Containing 32 1/2 acres and allowance of Six p. Cent & c. Surveyed for Powell VanCleve the 26th day of April 1833 on Warrant dated the 23rd February 1833.

To John Taylor Esq. S.G.

Robert Stuart D.S.

IN TESTIMONY that the above is a copy of the original remaining on file in the Department of Internal Affairs of Pennsylvania, made conformably to an Act of Assembly approved the 16th day of February, 1833, I have hereunto set my Hand and caused the Seal of said Department to be affixed at Harrisburg, this Eighteenth day of April 1907

Loac B. Brown
Secretary of Internal Affairs.